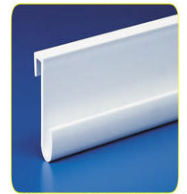


PoolCo USA

Miscellaneous Parts & Supplies

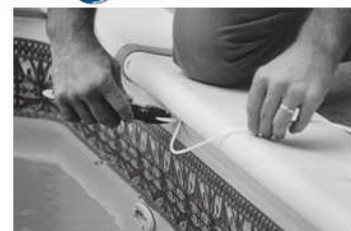
Item No.	Description	Price
<i>Bead Receiver & Liner Lock</i>		
QP-2581	A/G Pool Bead Receiver- 56" Long - Plastic (57 per case)	11.00
ST031	Rigid Bead Lock- 48" Long (48 per case)	7.00
ST032	Soft Bead Lock- 120'	40.00
32091498	Lock-N-Roll- 4/32" x 200' with tool	36.00
32091499	Lock-N-Roll- 5/32" x 100' with tool	36.00
32091500	Lock-N-Roll- 6/32" x 100' with tool	36.00
32091493	Bulk Lock-N-Roll- 4/32" x 1500'	230.00
32091494	Bulk Lock-N-Roll- 5/32" x 1500'	310.00
32091495	Bulk Lock-N-Roll- 6/32" x 1500'	360.00
32091496	Lock-N-Roll Tool	9.00
<i>Ladder Parts</i>		
RPF-1	Diving Fulcrum- cover for diving stand	35.00
ST007	Diving Fulcrum- 18" Long	35.00
SS-T	Stainless Steel Ladder Treads	36.00
420770	O/S Frost blow molded Ladder Tread – If Available	30.00
HIP-T	HIP 18" Ladder Treads-High Impact- (swan style also)	20.00
25562-100	HIP 20" Ladder Tread-High Impact	22.00
L-Bump	Ladder Bumpers- male or female	4.00
<i>Slide Parts</i>		
36631	Spray Kit w/fittings, tubing, nozzles – o/s Aqua Slide n Dive	34.00
36630	Water Tube replacement Kit	5.00
<i>Gauges</i>		
PGP-30 or 60	Side mount Gauge- 1/4" MPT 0-30 PSI	7.00
W1405	Back mount Gauge-1/4" MPT 0-60 PSI	7.00
A1000	Side mount Gauge- 1/8" MPT 0-50 PSI	7.00
VAC30	Side mount Vacuum Gauge- 1/4" MPT 0-30 PSI	14.00
<i>Hydrotherapy Fittings</i>		
10-5200	1 1/2" Water & Air- with 1/2" air tube, Easy to winterize	26.00
7000	Eyeball Seat Removal Tool	3.80
<i>Liner Accessories</i>		
SP387ST	Liner Rod Clips- 12 Stainless clips for Heldor Style pool	28.00
ST011	Liner Guard- Protects liner from step abrasion (9" x 36")	26.00



ST030 Above Ground Pool Bead Receiver
56" long
Packaged 60 per case



QP-1561 - 1500 ft. spool. white
QP-1562 - 120 ft. bags | 12 bags/ case, white



20" HIP



17.25" HIP
SWAN



PoolCo USA

SUN-MAR – Pool-Side Toilets

How a SUN-MAR Works

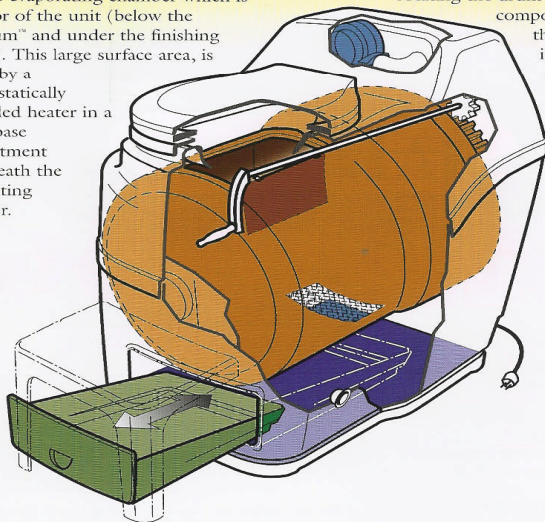
SUN-MAR Uses a Unique Three Chamber Approach to Composting.

The 1st Chamber

The composting itself takes place in a patented Bio-drum™ which tumbles to optimize mixing, oxygenation and moisture distribution. Excess liquid automatically passes through a screen in the rear of the Bio-drum™ directly into the evaporating chamber.

The 2nd Chamber

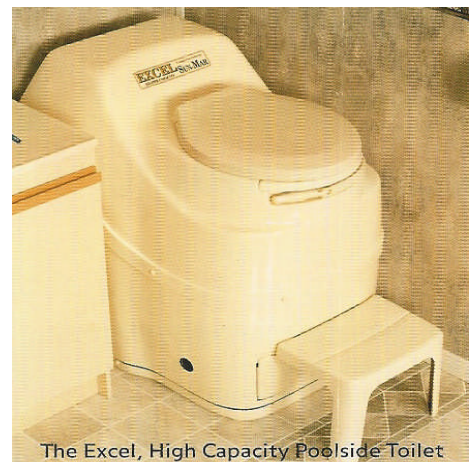
Excess liquid, if any, is evaporated from a separate evaporating chamber which is the floor of the unit (below the Bio-drum™ and under the finishing drawer). This large surface area, is heated by a thermostatically controlled heater in a sealed base compartment underneath the evaporating chamber.



Air is pulled by the fan over this warmed evaporating surface and up the vent stack. Under normal circumstances the unit will evaporate all excess liquids, but where an overload condition is expected, the safety drains at the rear should be connected to a container.

The 3rd Chamber

Composting is completed in the finishing drawer at the front of the unit. By rotating the drum backwards, compost drops into the drawer, where it is isolated from new fresh material and need not be emptied until more compost is to be extracted.



The Excel, High Capacity Poolside Toilet

Part No.	Description	Dealer Net Price	Factory List Price
COMPACT	Compact- Low profile Toilet	1,420.00	1,725.00
EXCEL	Excel- Larger Bio-drum, twice the composting capacity	1,475.00	1,795.00
EXCEL NE	Excel- Larger Bio-drum, Non-Electric	1,315.00	1,595.00
CS	Compost Sure- Retains moisture, frees air space, improves porosity, and helps break waste- 30L Bag.	15.50	19.00
CQ	Compost Quick- Enzymes help to speed up aerobic activity	14.50	19.00
MM	Microbe Mix- for starting and accelerating decomposition	15.00	22.50



Specifications:

	Regular Poolside Toilet Compact	High Capacity Poolside Toilet Excel
Capacity	4-5	6-8
Electrical Max Amps/Average Watts	2.0/125	2.4/150
Unit Dimensions (inches) Height/Width/Depth	27 1/2" /33/22	32/33/22 1/2
Overall Depth Required to Remove Drawer	45	48
Weight (lbs) Product/Shipping Carton	50/90	60/100
Shipping Carton (inches) Width/Length/Height	27/36/30	28/36/37

